


Texture by  **PILKINGTON**

NSG
GROUP



03 **Any Room**
Contemporary designs to suit any space

08 **Eternal**
Honour the past, embrace the future

11 **Icon**
Sophisticated elegance that captivates

13 **Privacy**
Explore our 5 levels of privacy

Light up your space.

At Pilkington UK, we strive to enhance the way we bring light into our homes. Combining unrivalled classic and contemporary designs to give your space the perfect touch of texture, while maintaining the privacy you desire.

Texture by Pilkington™ blends traditional techniques and modern innovation to bring you beautiful, high-quality products crafted in the UK.

No one offers a wider choice of original designs, created by renowned designers and architects, brought to life in partnership with artisan engravers.

Our three curated collections explore timeless designs that play with light and shade, casting beautiful stories written in sunlight across your space.

“Since 1852, Pilkington UK have manufactured **Texture by Pilkington™** in St Helens, North West of England. We’re proud to continue this tradition on our new rolled glass line, opened in 2025, which substantially decarbonises the product range and secures UK-based manufacturing for many years to come.”

Neil Syder,
Managing Director of Pilkington UK

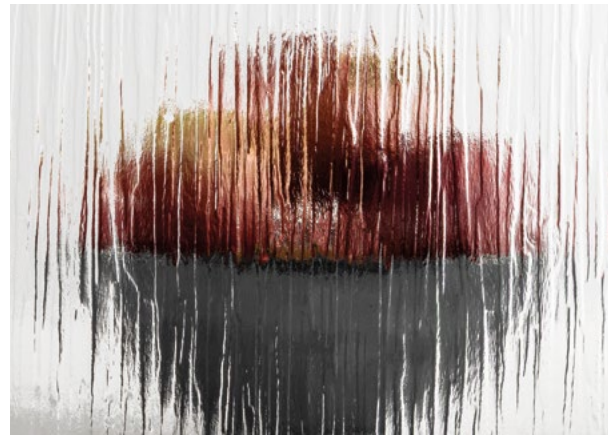
any room

Our Any Room collection showcases a variety of contemporary designs that suit any space, adding a touch of texture to the way the sunlight shines through your home.



Arctic™ Privacy 5

A true, retro classic. First introduced in 1907, this glass mimics the soft shapes of a sheet of crystal ice, obscuring vision while casting beautiful glimmers around the room.

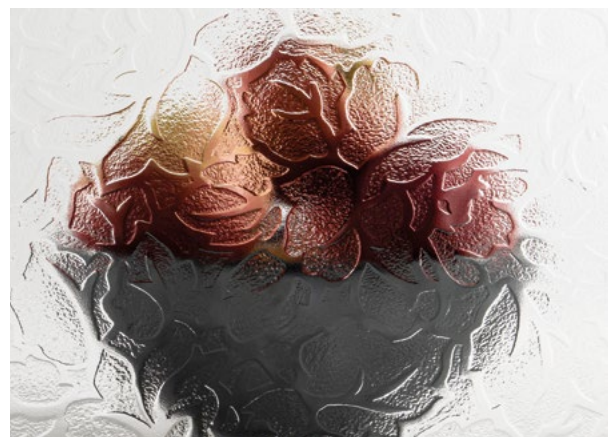


Cotswold™ Privacy 5

Designed by Brian Yale in 1964, this versatile design suits any interior décor style, inspired by natural wooden textures.

“Arctic™ brings a calming simplicity to any space – a gentle shimmer that feels both familiar and quietly contemporary. It’s a small touch that softens a room and makes it feel more considered.”

James Simpson, Marketing Manager



Florielle™ Privacy 4

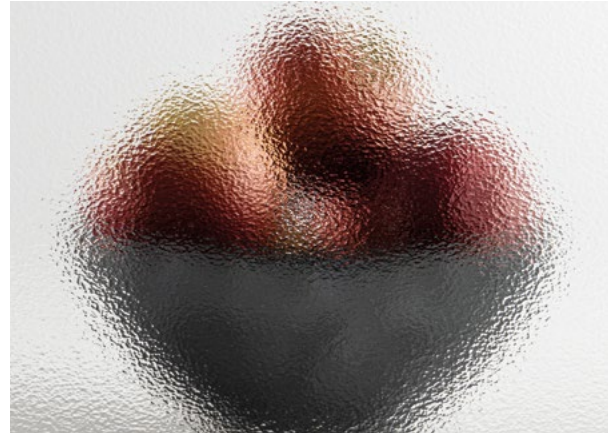
Originally described as ‘lush with rose blooms and foliage’, this pretty pattern compliments any space with soft, floral shaped glimmers.





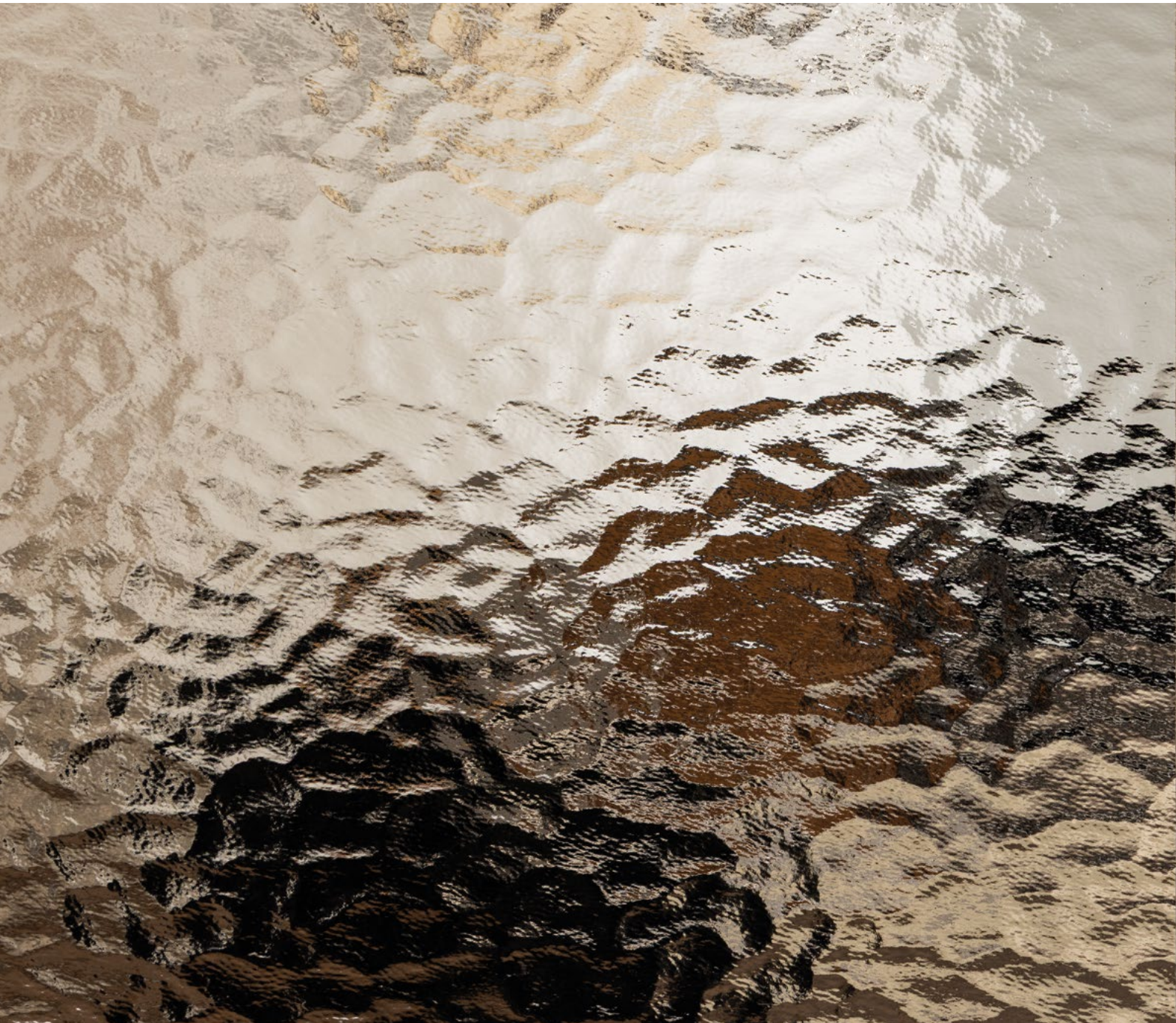
Minster™ Privacy 2

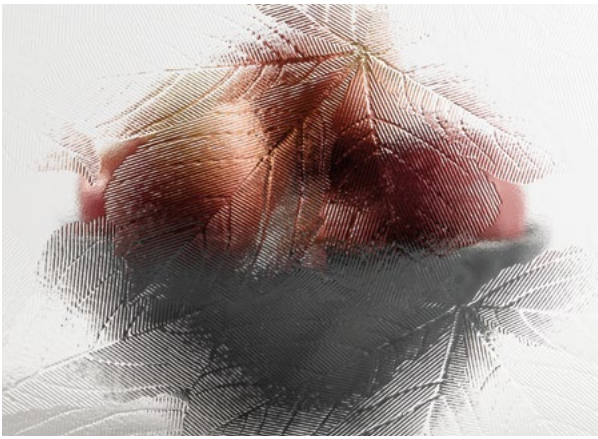
One of our 'Cathedral' Glasses. Designed in 1991, this subtle pattern is inspired by cast glass, where the cooling glass would adopt the texture of the stone mould used to make it, giving a natural, dappled effect. A classic style.



Stippolyte™ Privacy 4

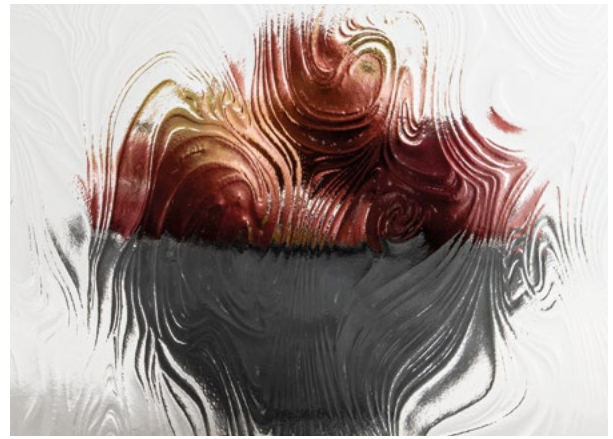
A classic, unfussy design that's achieved through small, closely set, stippled dots. Ultimate privacy, diffusing light to a soft glow around your space.





Sycamore™ Privacy 2

Bring the outside in with this delicate botanical pattern featuring hand etched sycamore leaves.



Taffeta™ Privacy 3

Inspired by the soft folds in taffeta silk, this swirling design adds movement to the way the light shines through your space.

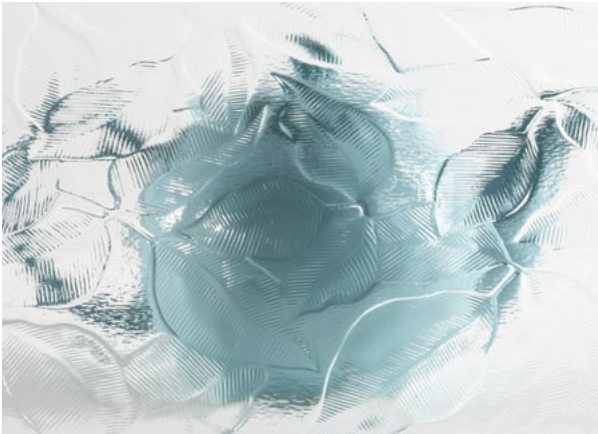




Eternal

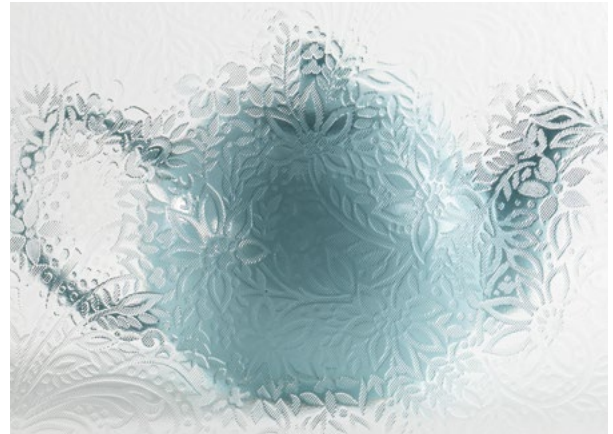
Our stunning Eternal collection has been specially curated to maintain the historic charm of heritage homes, period properties or interiors with a retro feel. Featuring a host of premium designs, crafted to compliment the fabrics, textures, and shapes that make this interior style unique.

Honour the past, embrace the future.



Autumn™ Privacy 3

A traditional foliage pattern of hand drawn leaves, created in the 1970s, giving any room a subtle touch of autumnal stillness.



Chantilly™ Privacy 2

A flowing floral pattern that would not be out of place in any Art Nouveau property. **Chantilly™** is based on highly detailed and delicate French lace.



Everglade™ Privacy 5

An iconic 70s swirling design that never goes out of style. Restore your space to a former glory with this nod to a staple style era.

“Everglade™ carries a quiet confidence – a nostalgic swirl that feels both familiar and renewed.
It honours a home’s story whilst growing with every new chapter.”

James Simpson, Marketing Manager

"Mayflower™ embodies the easy romance of vintage living, grounding a space in character while feeling thoughtfully contemporary."

James Simpson, Marketing Manager



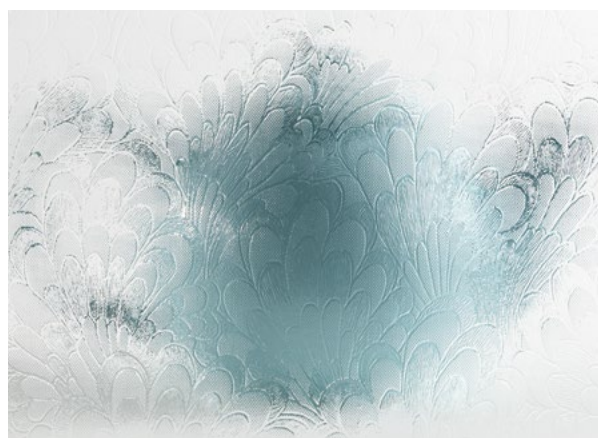
Mayflower™ Privacy 4

A pretty, vintage pattern that puts a fresh and charming spin to any room. A kitsch choice for bohemian, cottage and vintage inspired spaces.



Oak™ Privacy 2

A delicate design by Oliver Heath, inspired by oak leaves with a hand drawn feel.



Pelerine™ Privacy 4

An intricate ostrich feather pattern like 'a swirling cloak of privacy' with an intricate texture that gently diffuses the light.



Tribal™ Privacy 5

A striking, free hand-drawn aesthetic inspired by the vivid individuality of tribal patterns.



Warwick™ Privacy 1

A decorative glass designed to mimic the glass blowing process for an authentic feel.

Please note: Every piece of **Warwick™** is completely unique and due to this will never perfectly match a sample.



Icon

The Icon collection blends subtle, sophisticated elegance with intrigue and privacy, making a bold impact on your home aesthetic. Crafted with precision and attention to detail, each piece elevates your environment with unmatched style and quality. Our designs transform spaces into masterpieces, offering unique aesthetics that captivate your space and everyone in it.



Cassini™ Privacy 5

Inspired by Barcelona's mosaics, **Cassini™** uses an overlapping design to create a lenticular effect. Named after astronomer Giovanni Cassini, the evolving pattern creates a mask of anonymity.



Contora™ Privacy 4

This tight marbled pattern, designed by Oliver Heath, is influenced by the fractals in nature, such as raindrops on glass windows. The result? Beauty and privacy combined.

"Charcoal Sticks™ echoes the tools that shape creative expression, offering a modern, soulful alternative to etched glass."

James Simpson, Marketing Manager

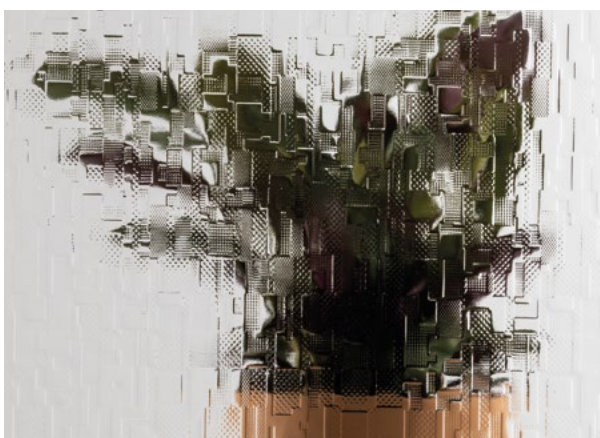


Charcoal Sticks™ Privacy 4

Designed by Oliver Heath in 1999, this pattern reflects the charcoal sticks used in life drawing classes, creating a simple yet delicate geometric texture.

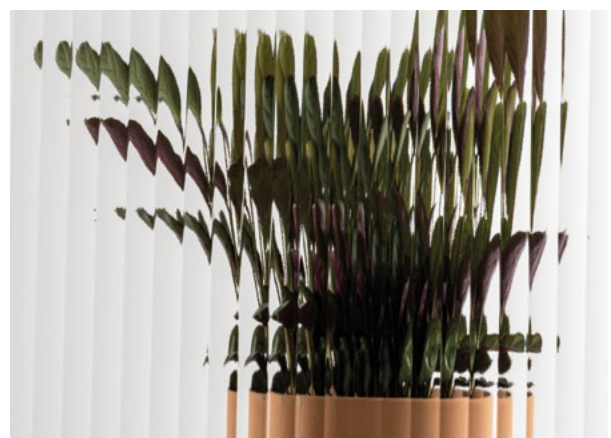


Charcoal Sticks™ Privacy 4



Digital™ Privacy 3

Inspired by early digital interfaces, Oliver Heath's design evokes the iconic geometric pattern of early computer technology, forming a complex, obscuring design with pixelated details.



Reeded™ Privacy 2

Originally designed by M.L. Anderson in 1933, this timeless classic is experiencing a modern resurgence. Its clean lines perfectly compliment soft furnishings, patterned lighting, vases, and glasses.

Privacy.

Texture by Pilkington™ prides itself on offering beautiful design married with maximum functionality. All patterns are available in toughened and laminated glass options for safety and security, and all are suitable for double and triple glazing.

Depending on the privacy desired, we categorise our designs into 5 levels of privacy, from 1 (least obscuration) to 5 (greatest obscuration).



Privacy Level 1 - **Warwick™**



Privacy Level 2 - **Oak™**



Privacy Level 3 - **Autumn™**



Privacy Level 4 - **Mayflower™**



Privacy Level 5 - **Everglade™**



Technical Information

If you use our glass it's essential for safety and performance reasons that it's correctly specified and installed.

Common areas of impact risk, where it's recommended that impact safety glass classified by BS EN 12600 is installed include:

- Glazed doors
- Glazing adjacent to doors
- Low-level glazing
- Bathroom areas
- Protective barriers
- Furniture and cabinets
- Office screen and partitions

For more information on the use of glass in critical locations, please refer to BS 6262-4.

We recommend that you get a sample from your window installer before making your final selection and purchase.

pilkington.co.uk/textureglass

This publication provides only a general description of the products. Further, more detailed, information may be obtained from your local supplier of Pilkington UK products. It is the responsibility of the user to ensure that the use of these products is appropriate for any particular application and that such use complies with all relevant legislation, standards, codes of practice and other requirements.

To the fullest extent permitted by applicable laws, Nippon Sheet Glass Co. Ltd. and its subsidiary companies disclaim all liability for any error in or omission from this publication and for all consequences of relying on it.

The Texture by Pilkington design brand names are registered trademarks.

Please note that imagery throughout is for illustration purposes only.



CE Marking confirms that a product meets the requirements of its relevant harmonised European Norm and can be placed on the market in the EU. The CE Marking Declaration of Performance for each product can be found at www.pilkington.com/ce



Pilkington United Kingdom Limited

Registered office: European Technical Centre
Hall Lane, Lathom, Nr Ormskirk, Lancashire, L40 5UF
enquiries@pilkington.com
www.pilkington.co.uk